

A person with short brown hair, wearing a blue t-shirt and dark shorts, stands on a grassy cliff overlooking the ocean. They are holding a white surfboard with a black and white graphic on the bottom. The ocean has a large, curling wave with white foam. Two trees with long, thin leaves frame the scene. The sky is blue with white clouds. In the foreground, there are some out-of-focus green plants and purple flowers.

 **EKAHI**



EKAHI is a Hawaiian word that means "first" or "number one." This name reflects our ambition to create the best surfboards and accessories that stand out in the market. We specialize in high-performance, lightweight carbon surfboards that combine design and durability for all surfers.

All our products are developed in France, drawing on more than 40 years of surfing experience. We are surfers first and we know what great gear should feel like in the water and under your feet.

THE ORIGIN OF EKAHI

The story of Ekahi Surfboards begins with a passionate surfer our founder, Mathis, a high-level free surfer who grew up riding the world-class waves of the Landes and Basque Country.

Over the years, Mathis tested boards from the most renowned brands. But none quite met his expectations. As his surfing evolved marked by speed, flow, and powerful aerial maneuvers, he kept pushing the limits and breaking his boards. Standard PU constructions simply couldn't withstand the intensity of his surfing.

Backed by a higher education in composite materials, Mathis decided to take things into his own hands. He began designing and building his own ultra-fast, carbon fiber boards, optimized for

strength, performance, and precision. The results were immediate: more drive, smoother turns, and the durability to withstand the hardest landings.

This passion project quickly turned into a bigger vision : the birth of Ekahi Surfboards. A brand shaped by real surf experience, technical expertise, and a relentless pursuit of perfection.

Ekahi is more than just a surfboard company. It's a family-driven adventure, a legacy of passion passed from one generation to the next. Every board we craft reflects that commitment: to performance, durability, aesthetic excellence, and a bold ambition to compete directly with the industry's top names.

CARBON



SURFBOARDS

MODELS

22



Squash



Channels



53



Twin Rocket



Mid



Long



Single



NEXT GENERATION CARBON CONSTRUCTIONS

*DESIGNED IN FRANCE,
BUILT FOR PERFORMANCE*

Ekahi Surfboards is committed to providing high-quality surfboards at an affordable price that meet the needs and requirements of surfers of all levels. Our choice to produce epoxy carbon boards is the result of a thoughtful strategy focused on quality, performance, durability, positive environmental impact, and innovation based on rigorous testing (2 years of R&D).

Drawing on our experience of over 40 years as surfers, we aimed for :

- **Optimal performance** : Crafted using high-grade carbon fiber and vacuum bagging technology, our surfboards are engineered for elite-level performance. The precision-shaped outlines deliver exceptional responsiveness, control, and drive on par with the most respected names in the industry. Carbon fiber construction enhances flex memory while significantly reducing weight, offering explosive acceleration and razor-sharp maneuverability. Vacuum bagging ensures optimal resin distribution and structural integrity, resulting in a lighter, stronger, and more durable board. Whether you're carving powerful turns or

pushing limits in critical conditions, these boards are built to perform session after session, wave after wave.

- **Exceptional durability** : resistance to dents, no yellowing, uninterrupted sessions due to their strength, extended durability reducing the need to replace boards frequently, thereby reducing the overall environmental footprint, and better resale value.

- **Engineered Weight Optimization Performance You Can Feel** : Our goal was never to create the lightest board possible because light isn't everything. Instead, we've crafted a board with purposeful weight, using premium carbon and carbon-Kevlar construction to deliver balance, control, and lasting performance. The result is a ride that feels powerful yet precise, fast yet stable. Expect smoother lines, sharper turns, and total confidence across all conditions.

- **Versatility** : versatile, suitable for a variety of surfing conditions. They will excel in both small, soft waves and larger, more hollow waves.

- **Affordable and highly competitive price** :

Despite the fact that the manufacturing cost is really much higher than that of a PU polyester board, their high performance and exceptional quality, our epoxy carbon boards are offered at a very competitive price in the market, thus providing excellent value for money to passionate surfers. The addition of channels without a price increase is one example.

- **High-performance fins included** : All our boards come with high-performance fins, ensuring optimal grip, control, and maneuverability. These fins are designed to enhance the overall surfing experience by providing superior responsiveness and drive in all wave conditions.

- **Aesthetic Excellence** : Our boards are not only high-performing but also really beautiful. Surfers place great importance on the appearance of their boards, as a surfboard is a special object that represents their passion and style. We take great care in crafting visually stunning designs that stand out in and out of the water.

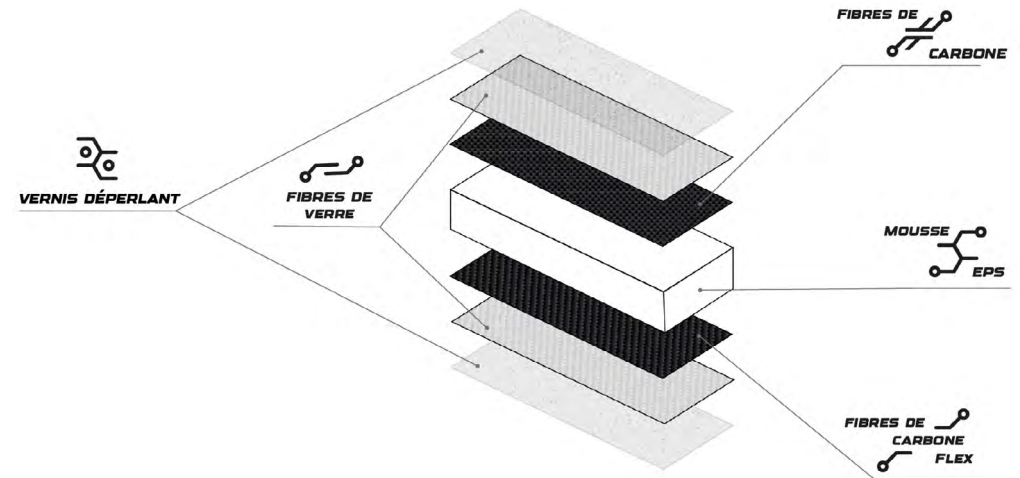
TECHNOLOGY

AT EKAHI, WE HAVE DEVELOPED TWO INNOVATIVE TECHNOLOGIES BASED ON CARBON FIBER :

CARBON FLEXLITE TECHNOLOGY

We have developed a new Carbon Flexlite Technology. This innovative approach, combined with our vacuum bagging process, involves utilizing plain weave carbon fiber on the deck for enhanced strength and durability, ensuring your board withstands the toughest conditions. On the bottom, we incorporate twill

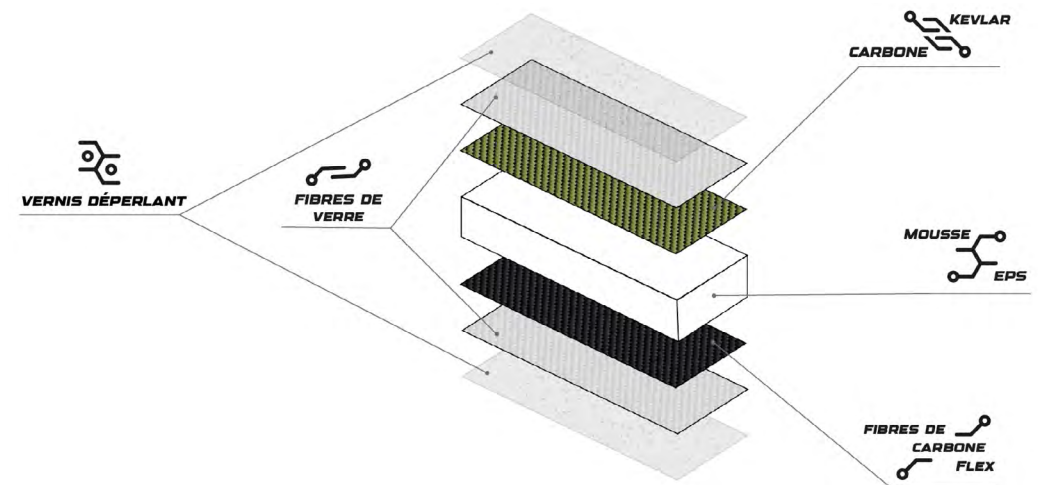
weave carbon fiber, which provides increased flexibility for a more responsive and dynamic surfing experience. Additionally, we use a high-density EPS foam core and high-quality epoxy resin, optimizing both the durability and performance of our boards, giving surfers the best of both worlds.



CARBON KEVLAR FLEXLITE TECHNOLOGY

Carbon Kevlar Flexlite Technology blends the snap of carbon with the impact resilience of Kevlar to deliver a uniquely balanced ride. Carbon layers drive responsiveness and speed transfer, while targeted Kevlar reinforcement shields high-stress

zones from dings, heel dents, and abrasion. Paired with our high-density EPS core and premium epoxy resin, this layup increases longevity without sacrificing feel giving surfers a fast, lively board that stays dependable session after session.



TECHNOLOGY

VACUUM BAGGING PROCESS

All our boards are made using the vacuum bagging process. Each one is composed of an EPS foam core with a density of 35 kg/m³, along with 3k carbon fiber and fiberglass. The vacuum bagging process starts with laying out the ingredients (foam, carbon, and fiber), then a sheet is tightly sealed around the piece. Vacuum is then applied to remove air from the bag, creating a vacuum environment.

This technique enables achieving a uniform distribution of resin, enhancing the mechanical properties and strength of the board. Additionally :

- Better fiber/resin ratio
- Avoidance of air bubbles
- Reduction of toxic emissions
- Better adhesion to the foam core
- Reduced overall weight
- Uniform resin distribution
- More controlled and consistent flex



SMART AESTHETICS

COLORED DECKS FOR REAL-WORLD USE

On most of our carbon boards, we chose to add color to the deck not just for aesthetics, but for practical reasons as well.

Raw black carbon absorbs a lot of heat under the sun, which can lead to board damage over time and causes wax to melt much faster creating a mess and affecting grip during your session.

A colored deck significantly reduces heat absorption, helping to preserve the board's structural integrity and keeping the wax stable for longer. It also maintains a cleaner, more polished look ride after ride. In short: better performance, longer life, and a better surfing experience.



SQUASH

The SQUASH is a high-performance surfboard built for surfers seeking speed, responsiveness, and control. Its refined outline and balanced shape offer the perfect blend of maneuverability and drive, making it ideal for sharp turns, explosive accelerations, and seamless transitions.

Featuring a moderate single concave that deepens into a double concave between the fins, this design maximizes lift and speed while enhancing responsiveness underfoot. The medium entry and exit rocker ensure quick take-offs and smooth

release, while the medium-low rails provide an excellent balance of grip and release, making it versatile across a wide range of conditions.

The Thruster FUTURES setup combined with our Ultra Light EKAHI fins delivers precision and agility, giving you full control in critical sections.

Built with Vacuum Bagging Carbon Epoxy Technology, the SQUASH is engineered for top-tier performance.

Construction : Vacuum Bagging - Carbon Flexlite Technology or Carbon-Kevlar Flexlite Technology - Stringerless

Rocker : Moderate (balanced entry & exit)

Rails : Medium-Low Performance Rails

Bottom shape : Moderate single concave transitioning to deep double concave

Tail : Squash Tail - for versatility & control

Fin setup : Thruster, FUTURES, comes with Ultra Light EKAHI Fins

Ideal waves size : 1 to 8 ft

Skill level : Intermediate to Pro

High Performance Fins Included :



LENGTH	WIDTH	THICKNESS	VOLUME (L)
5'8	18 3/4"	2 3/8"	26.16
5'9	19"	2 3/8"	27.02
5'10	19 1/4"	2 7/16"	28.65
5'11	19 1/2"	2 1/2"	29.99
6'0	19 3/4"	2 1/2"	31.61
6'1	19 7/8"	2 1/2"	32.40
6'2	20"	2 9/16"	33.84



SQUASH

Pink



Yellow



Blue



White



Carbon Kevlar





CHANNELS

The CHANNELS is a high-performance shortboard built for surfers seeking explosive speed, sharp control, and maximum drive. Engineered with a deep single concave and integrated channels, this board optimizes water flow to reduce drag, increase acceleration, and enhance grip during high-speed maneuvers.

With the CHANNELS, you get instant speed, locked-in control, and razor-sharp maneuverability an unbeatable combination for surfers pushing their performance.

By directing water efficiently through the bottom contours, the CHANNELS offers:

- Unmatched speed – rapid acceleration and effortless glide.
- Superior bite & drive – locked-in control for precise, aggressive turns.
- Enhanced lift & stability – increased planing ability in smaller waves and confidence in powerful surf.

Construction : Vacuum Bagging - Carbon Flexlite Technology or Carbon-Kevlar Flexlite Technology - Stringerless

Rocker : Medium – ideal balance of speed & control

Rails : Medium – perfect blend of grip & release

Bottom shape : Deep single concave with performance-driven channels

Tail : Swallow Tail – adds hold & maneuverability

Fin setup : Thruster, FUTURES, comes with Ultra Light EKAHI Fins

Ideal waves size : 1 to 8 ft

Skill level : Suitable for all levels, from intermediate to pro

High Performance Fins Included :



LENGTH	WIDTH	THICKNESS	VOLUME (L)
5'8	19"	2 3/8"	27.19
5'9	19 1/4"	2 3/8"	27.95
5'10	19 5/16"	2 7/16"	29.30
5'11	19 9/16"	2 1/2"	30.85
6'0	19 3/4"	2 1/2"	31.58
6'1	19 7/8"	2 9/16"	33.03
6'2	20"	2 5/8"	34.51



CHANNELS

Pink



Yellow



White



Pearl White



Carbon Kevlar





The FIFTY THREE is a versatile, high-performance surfboard designed for speed, control, and effortless paddling. Its compact and streamlined shape makes it ideal for a wide range of conditions, from small, playful beach breaks to powerful overhead waves. Whether you're a progressing surfer or a seasoned pro, the FIFTY THREE delivers a smooth, fast, and highly maneuverable ride.

Its low-rocker profile, flat throughout with a slight lift at the entry, maximizes speed and drive, helping surfers connect sections that would typically be out of reach. The bottom contour transitions from a rolled vee entry to a subtle single concave, blending

into a vee double through the tail, ensuring exceptional rail-to-rail control and fluid transitions.

Built with our Next Generation Vacuum Bagging Carbon Flexlite Construction, the FIFTY THREE is lightweight, durable, and highly responsive. The 5-fin FUTURES setup allows for thruster or quad configurations, letting you fine-tune your ride for different conditions.

For experienced surfers, we recommend riding it 1-2 inches shorter than your usual shortboard for a more responsive feel.

Construction : Vacuum Bagging - Carbon Flexlite Technology or Carbon-Kevlar Dual Technology - Stringerless

Rocker : Flat throughout with a slight lift in the entry – optimized for speed & flow

Rails : A balanced design combining elements of low and pinched rails for grip and control

Bottom shape : Rolled vee entry into a subtle single concave

Tail : Rounded Pin Tail – balance of hold and maneuverability

Fin setup : 5-fin FUTURES, surf as a thruster or quad (comes with 3 Ultra Light EKAHI Fins)

Ideal waves size : 1 to 8 ft

Skill level : Suitable for all levels, from progressing surfers to pros

High Performance Fins Included :



LENGTH	WIDTH	THICKNESS	VOLUME (L)
5'6	19 3/4"	2 3/8"	28.60
5'8	20 1/8"	2 7/16"	30.83
5'10	20 1/4"	2 1/2"	32.74
5'11	20 3/8"	2 9/16"	34.30
6'0	20 1/2"	2 5/8"	35.79
6'2	20 3/4"	2 11/16"	38.11
6'4	21"	2 13/16"	41.43
6'6	21 1/2"	2 7/8"	43.54



53

Pearl White



White



Blue



Carbon Kevlar





The TWENTY TWO is a high-performance twin-fin designed for surfers who crave speed, flow, and seamless rail transitions. Combining the classic twin-fin feel with modern high-performance elements, this board delivers tight, responsive turns and incredible down-the-line speed.

Its sleek, refined nose outline allows for precision in critical sections, mimicking the control of a high-performance shortboard while maintaining the

effortless glide and freedom of a twin. The medium rocker is perfectly balanced to generate instant speed, enhanced by our Next Generation Carbon Flexlite Technology, which naturally amplifies acceleration and responsiveness.

Whether you're looking to carve stylish arcs or push progressive maneuvers, the TWENTY TWO offers the perfect fusion of speed, looseness, and control.

Construction : Vacuum Bagging – Carbon Flexlite Technology – Stringerless

Rocker : Medium – optimized for both speed and control

Rails : Medium – perfect balance of grip and release

Bottom shape : Single concave – for added drive and lift

Tail : Fish Tail – enhances speed and smooth transitions

Fin setup : Twin-Fin, FUTURES, comes with a set of full fiberglass EKAHI Fins

Ideal waves size : 1 to 6 ft

Skill level : Intermediate to Pro

High Performance Fins Included :



LENGTH	WIDTH	THICKNESS	VOLUME (L)
5'8	19 7/16"	2 7/16"	29.00
5'9	19 5/8"	2 1/2"	30.36
5'10	19 7/8"	2 9/16"	31.97
5'11	20"	2 5/8"	33.40



22

White





MID

The MID is the perfect blend of effortless wave-catching, smooth flow, and high-performance maneuverability. Designed for surfers who love the paddle power and glide of a mid-length but want enhanced responsiveness, this board is ideal for a wide range of conditions, from small, weak waves to powerful, hollow surf.

Unlike traditional mid-lengths, the MID is built for speed and precision. The bottom channels and single concave create instant acceleration, extra grip, and drive, allowing for better hold in bigger waves while keeping the ride fast and fluid. The wider forward outline ensures easy paddling and

smooth transitions, while the refined tail design provides exceptional control and responsiveness.

We've kept a bit of extra volume from the tail through the front third of the board to boost paddle power and add lift in slower sections, all without sacrificing tail responsiveness. This helps generate early momentum and ensures smooth glide in softer waves.

Whether you're a beginner looking for an easy paddler or an experienced surfer craving performance in a mid-length, the MID is a game-changer.

Construction : Vacuum Bagging – Carbon Flexlite Technology – Wood stringer

Rocker : Flat – ideal balance of speed and maneuverability

Rails : Medium – a perfect blend of stability and performance

Bottom shape : Single concave with channels for added speed, grip, and hold

Tail : Rounded Pin Tail – smooth, controlled turns with excellent hold

Fin setup : Thruster, FUTURES, 3 fin setup (for sizes 6'4 to 6'8) / 2+1 setup (for sizes 6'10 & 7'2) – offering versatility in different wave conditions

Ideal waves size : 1 to 6 ft

Skill level : All levels – from beginners to pros

High Performance Fins Included :



LENGTH	WIDTH	THICKNESS	VOLUME (L)
6'4 (THRUSTER)	20"	2 5/8"	36.06
6'6 (THRUSTER)	20 1/4"	2 5/8"	38.05
6'8 (THRUSTER)	20 5/16"	2 11/16"	40.06
6'10 (2+1)	20 7/8"	2 3/4"	43.22
7'2 (2+1)	21 3/16"	2 13/16"	47.07



MID

Pearl White



White



Pink





TWIN ROCKET

The TWIN ROCKET is a versatile mid-length surfboard designed for surfers who want the perfect balance of paddle power, speed, and maneuverability. Whether you're chasing small, weak waves or larger, more powerful surf, this board delivers a smooth, flowing ride with plenty of drive.

Unlike traditional mid-lengths, the TWIN ROCKET is built for performance. The channels on the bottom create instant acceleration and extra grip, allowing for better hold in bigger waves while still maintaining the effortless glide that mid-lengths are known for. The wider forward outline helps with

early wave entry, while the refined tail design keeps the board responsive and agile through turns.

We've kept a bit of extra volume from the tail through the front third of the board to boost paddle power and add lift in slower sections, all without sacrificing tail responsiveness. This helps generate early momentum and ensures smooth glide in softer waves.

If you're looking for a mid-length with added speed, precision, and versatility, the TWIN ROCKET is your go-to choice.

Construction : Vacuum Bagging – Carbon Flexlite Technology – Wood stringer

Rocker : Flat – Optimized for speed and effortless glide

Rails : Medium – a perfect blend of stability and performance

Bottom shape : Single concave with channels for added speed, drive, and hold

Tail : Rounded Pin Tail – ensures smooth, controlled turns

Fin setup : Twin-Fin, FUTURES, comes with a set of full fiberglass EKAHI Fins

Ideal waves size : 1 to 6 ft

Skill level : All levels – from beginners to advanced surfers

High Performance Fins Included :



LENGTH	WIDTH	THICKNESS	VOLUME (L)
6'6	20 7/8"	2 3/4"	41.11
6'10	21 3/16"	2 13/16"	44.86
7'2	21 5/16"	2 13/16"	47.29



TWIN ROCKET

White



LONG



Our Carbon longboard combines modern performance with authentic longboarding sensations, a lightweight feel, striking the perfect balance between responsiveness, inertia, and durability. Featuring 100% carbon lamination on both the top and bottom, this board delivers a smooth, fast ride while ensuring outstanding impact resistance.

Working in waves from ankle high to well overhead, the LONG can be ridden and enjoyed by everyone.

Available in 8' and 9'1, it's the ultimate choice for surfers seeking a versatile, high-performance longboard that offers both drive and maneuverability.

Construction : Vacuum Bagging – Carbon Flexlite Technology – Wood stringer

Rocker : Optimized central curve – enhances speed when surfing from the tail and keeps you perfectly positioned for noserides

Rails : Performance rails finely sculpted for superior grip and control, ensuring smooth handling through every turn

Bottom shape : A light single concave in the nose for nose riding, into a double concave through the tail with a slight vee out the end

Tail : Round – for smooth, controlled turns and enhanced stability

Fin setup : 2+1 Fin – comes equipped with our ultralight premium EKAHI fins

Ideal waves size : 1 to 6 ft – excels in small to mid-sized waves

Skill level : All levels – perfect for beginners, style enthusiasts, and seasoned longboarders alike

High Performance Fins Included :



LENGTH	WIDTH	THICKNESS	VOLUME (L)
8'0	22"	2 3/4"	56.06
8'0	22"	3"	61.20
9'1	22 1/2"	2 3/4"	64.76
9'1	22 7/8"	2 15/16"	71.03



LONG

Pearl White





The SINGLE is more than just a longboard, it's a tribute to the timeless style and grace of 1960s surfing, designed for surfers who appreciate the art of noseriding, fluid lines, and effortless glide. Featuring a classic single-fin setup, this board brings a pure, traditional feel, perfect for clean trimming, graceful cross-steps, and smooth, stylish turns.

But while its design honors the golden era of surfing, its construction is anything but old-school.

The SINGLE is crafted using high-performance carbon epoxy over a lightweight EPS foam core, blending modern durability and responsiveness with the soul of a classic log.

Construction : Vacuum Bagging – Carbon Flexlite Technology – Wood stringer

Rocker : Optimized central curve enhances speed when surfing from the tail and keeps you perfectly positioned for noserides

Rails : 60/40 rails – finely sculpted for superior grip and control, ensuring smooth handling through every turn

Bottom shape : Generous single concave from the nose through the middle, transitioning to a rolled V out the tail for ultimate glide and responsiveness

Tail : A squash tail with a wood inlay – for smooth, controlled turns and enhanced stability

Fin setup : Single Fin – comes equipped with our premium EKAHI full fiberglass fin

Ideal waves size : 1 to 6 ft – excels in small to mid-sized waves

Skill level : All levels – perfect for beginners, style enthusiasts, and seasoned longboarders alike

High Performance Fins Included :



LENGTH	WIDTH	THICKNESS	VOLUME (L)
8'0	22"	2 7/8"	58.39
9'1	22 7/8"	3"	71.31



SINGLE

Pearl White



TRACTION



PADS

PADS MODELS

Squash



Round



Flat



Grom



DESIGNED FOR PERFORMANCE, BUILT TO LAST

Engineered with high-quality materials, our pads ensure a firm yet responsive grip, giving you total control in any condition.

Our pads are crafted to be exceptionally lightweight, adding minimal weight to your board and preserving its performance in the water.

We've solved a common issue with competitor pads the detachment at the junction between the kick tail and the flat section. Our innovative design and improved adhesion technology eliminate this problem, ensuring long-lasting reliability.

Stand out in the lineup with our sleek, modern designs that combine style with functionality.

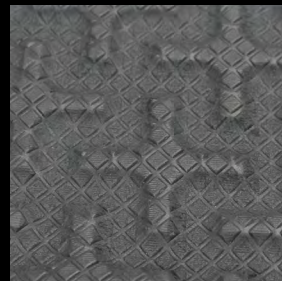
Unlike other pads that can cause irritation, ours are soft to the touch, protecting your knees during long sessions without compromising grip.

We use the most effective and premium-grade 3M adhesive, known for its superior strength and durability. This high-end adhesive ensures your pad stays securely in place, even under the toughest conditions.

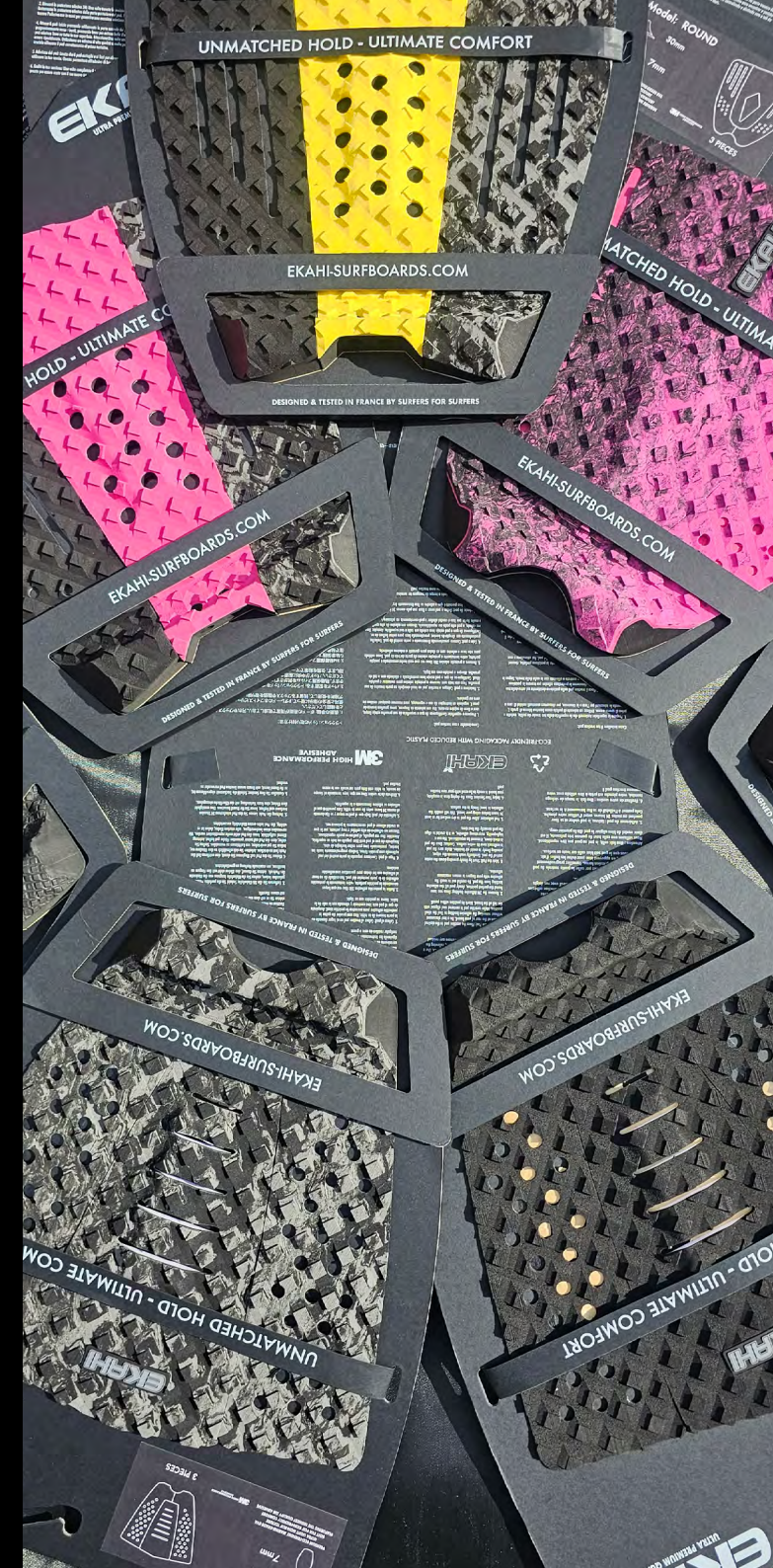
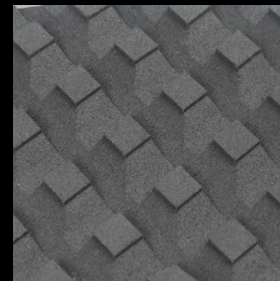
Our traction pads come in a range of colors designed to complement the aesthetics of our surfboards and leashes. Whether you're aiming for a sleek, understated look or a bold, eye-catching style, we've got you covered.

PATTERN AVAILABLE:

+



Square



SQUASH

Length : 313mm

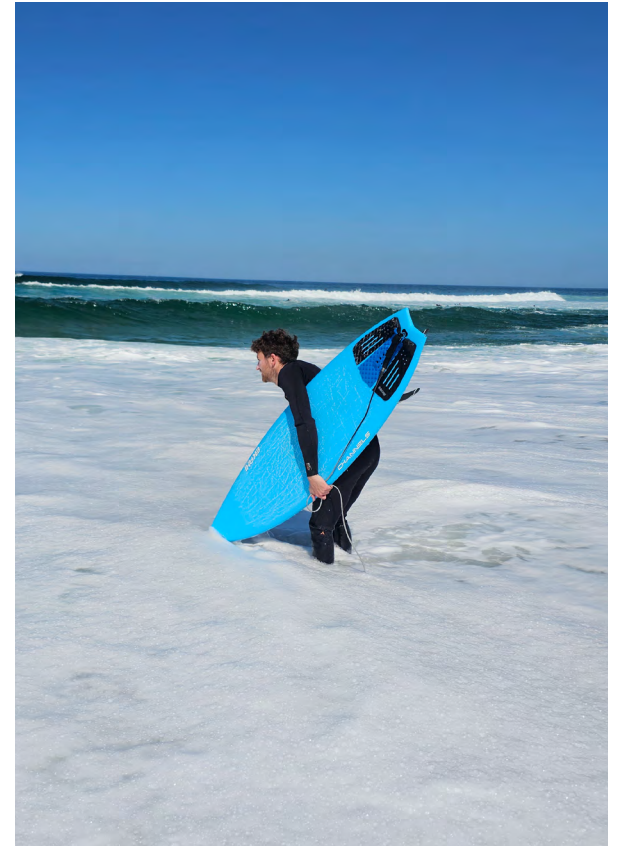
Width : 304mm

Pieces : 3

Arch : 7mm

Power Kick : 30mm

Pattern : Square / +



PATTERN : +

PATTERN : SQUARE

Black

White

Turquoise

Marble

*Black/Blue/
Marble*

Black/Pink/Marble

*Black/Yellow/
Marble*





ROUND

Length : 320mm

Width : 310mm

Pieces : 3

Arch : 7mm

Power Kick : 30mm

Pattern : Square / +



PATTERN : +

PATTERN : SQUARE

Black

White

Turquoise

Marble

Black/Blue

Black/Pink





FLAT

Length : 305mm

Width : 300mm

Pieces : 2

Arch : Flat

Power Kick : 30mm

Pattern : Square / +
/Square Lines



PATTERN : +

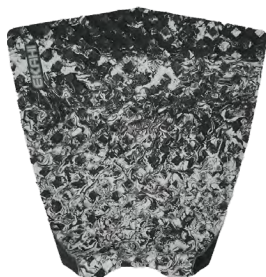
Black



White



Marble



White



Black Lines



PATTERN : SQUARE



GROM

Length : 305mm

Width : 300mm

Pieces : 3

Arch : 7mm

Power Kick : 30mm

Pattern : Square



PATTERN : SQUARE

Marble





SURF



LEASHES

CORD LENGTH AVAILABLE

6

Our 6' leash is built for versatility and everyday surf conditions, offering three cord thickness options to suit your needs:

- 5mm – Lightweight for small to medium waves, ideal for minimal drag.
- 6mm – Balanced strength and flexibility.
- 7mm – Extra durability and security for heavier surf.

7

Designed for bigger boards and more powerful waves, the 7' leash with 7mm cord delivers maximum strength and security without compromising comfort.

Perfect for step-ups, mid-lengths, or everyday use in solid surf.

8

Built for longboards and bigger setups, the 8' leash with a 7mm cord offers the perfect balance of strength, length, and reliability.

Ideal for surfers who need extra reach and durability, especially in powerful or overhead waves.

9

Specifically designed for longboards and noseriders, the 9' leash with a 8mm cord delivers maximum reach, durability, and control, even in powerful surf.

Ideal for those who want freedom of movement while maintaining a secure connection to their board.

CORD DIAMETER AVAILABLE

PRO
5mm

ULTRA-LIGHT PERFORMANCE

Designed for small waves and lightweight boards like high-performance shortboards. Its thin profile reduces drag in the water, providing maximum freedom of movement. Ideal for mellow conditions where leash strength is less of a concern.

PRO +
6mm

THE PERFECT BALANCE

A versatile leash suitable for most conditions and board types (shortboards, fish, midlengths). It offers a great balance between weight and durability, perfect for waves between 3ft and 5ft (1m to 1m50). This is the go-to size for everyday surf sessions.

POWER
7mm

STRENGTH AND RELIABILITY

Built for bigger waves and higher-volume boards (longboards, midlengths, guns). It provides extra durability and prevents breakage in more powerful conditions, ranging from 3ft to 8ft (1m to 2m50). A solid choice for surfers looking for extra security in heavier surf.

POWER +
8mm

MAXIMUM SAFETY

Designed for big waves and extreme conditions. Its thicker cord ensures maximum strength, keeping your board close even in waves over 8ft (2m50+). A must-have for surfers tackling serious surf.



Perfect Color Match:

Available in three different colors, our leashes are designed to perfectly match our surfboards and pads.

New for this season: bi-color cords for a bold, modern look that blends style and performance.

Strength :

Available in 5mm to 8mm thickness, our leashes are built to resist extreme tension and keep your board close, even in powerful surf.

Comfort :

Extra soft grip cuffs provide a comfortable, anti-slip fit, while the lightweight design reduces drag.

High grade materials:

Built with premium German urethane cords, TPU connectors, and marine-grade stainless steel swivels. The extra grip cuffs ensure a secure and slip-resistant fit.

Durability :

Designed to withstand harsh conditions. Strong urethane cords, reinforced Velcro, and durable components ensure long-lasting performance.

Black / Blue

Available in :

*6' – 5mm / 6mm / 7mm cord
7' / 8' – 7mm cord*



OTHER COLORS

Black / Grey

Available in :

*6' – 5mm / 6mm / 7mm cord
7' / 8' – 7mm cord*



Black / Pink

Available in :

*6' – 5mm / 6mm / 7mm cord
7' / 8' – 7mm cord*



Black

Available in :

9' – 8mm cord



SOFT



SURFBOARDS

ULTIMATE COMFORT MAXIMUM SAFETY

Built with a soft yet durable IXPE top deck, our softboards are designed for maximum comfort and safety. No more rash or irritation like with rough-textured boards. The smooth surface is gentle on the skin perfect for beginners learning to pop up without the risk of cuts or rash. The deck also holds wax extremely well, delivering great grip and control.

But it's not just for beginners experienced surfers will love the fun and responsiveness in hollow waves and shore breaks. Light, safe, and seriously fun, our softboards are made to handle anything from your first wave to your next barrel.

This board offers a smooth, stable ride for those starting their journey, while delivering the precision and control demanded by experienced wave riders.

Crafted with premium materials and advanced heat lamination technology, it ensures an exceptional surfing experience in all conditions.

To enhance its uniqueness, the board's color designs will change regularly. We have chosen fun colors that stand out from the ordinary, and each board is released in very limited series.

The removable fins make transport easier providing a personalized surfing experience, and every board becomes a statement piece, blending functionality with personalized aesthetics.





Designed to accommodate both beginners and seasoned surfers, this board offers a smooth, stable ride for those starting their journey, while delivering the precision and control demanded by experienced wave riders.

Core material :

- High-density EPS foam core for lightweight buoyancy and strength.
- Dual wood stringers for added rigidity and control (with an additional resin stringer starting at 7' for enhanced durability on larger boards).

Deck material :

- IXPE foam deck for a soft, comfortable grip and excellent durability, offering a non-slip surface that enhances stability for both beginners and experienced surfers.

Bottom layer :

- HDPE slick bottom for superior glide and reduced drag, ensuring optimal performance across various wave conditions.

Intermediate layers :

- Substrate foam layer for structural integrity and a smooth lamination finish.
- XPE foam layer, providing enhanced resilience, flexibility, and shock absorption.

LENGTH	WIDTH	THICKNESS	VOLUME (L)
5'6	21"	2 1/2"	36.00
6'0	20 3/4"	3"	45.00
6'6	21"	3"	52.00
7'0	21 1/2"	3"	58.00
8'0	22"	3"	68.00



5'6"

Blue / Yellow



Green / Tie Dye



Pink / Mandala



Grey / Blue Camo



Orange / Green





Blue / Yellow



Green / Tie Dye



Pink / Mandala



Pink / Yellow



Yellow / Yellow



Grey / Blue Camo



Orange / Green





Pink / Mandala



Grey / Blue Camo



Pink / Yellow



Orange / Green



Blue / Blue Camo





*Pink
Mandala*



*Yellow
Grey*



*Grey
Blue Camo*



*Yellow
Yellow*



*Blue
Mandala*



*Orange
Green*



*Blue
Blue*



*Green
Green*



*Pink
Yellow*





Pink
Mandala



Green
Green



Grey
Blue Camo



Orange
Green



Yellow
Yellow



Yellow
Grey



Blue
Mandala



Grey
Blue



Blue
Blue



Pink
Yellow



Manta Global Shape – Sole Proprietorship

SIREN : 949 032 429

Email: contact@ekahi-surfboards.com

Register (RCS Bayonne)

VAT number: FR53 949 032 429

Head office: Anglet (France)



© 2026 Manta Global Shape – All rights reserved.
Non-contractual photos – Features subject to change.

Ekahi® is a trademark registered with the French National Institute of Industrial Property (INPI). Any use, reproduction, or imitation without prior authorization constitutes a violation of trademark law.